



M I D D L E Ground

Co production of place as a means to counter displacement
and other evils of development
in
Bandung, Indonesia

Archana Ramesh
M.Arch University of Melbourne



Kampung Pelesiran, Cipaganti, Lebak Siliwangi, 2019

KAMPUNG KOTA



Elevated walkway - Terras Cihampelas, Jarrdin Apartment, Cihampelas walk mall (Ciwalk), 2019

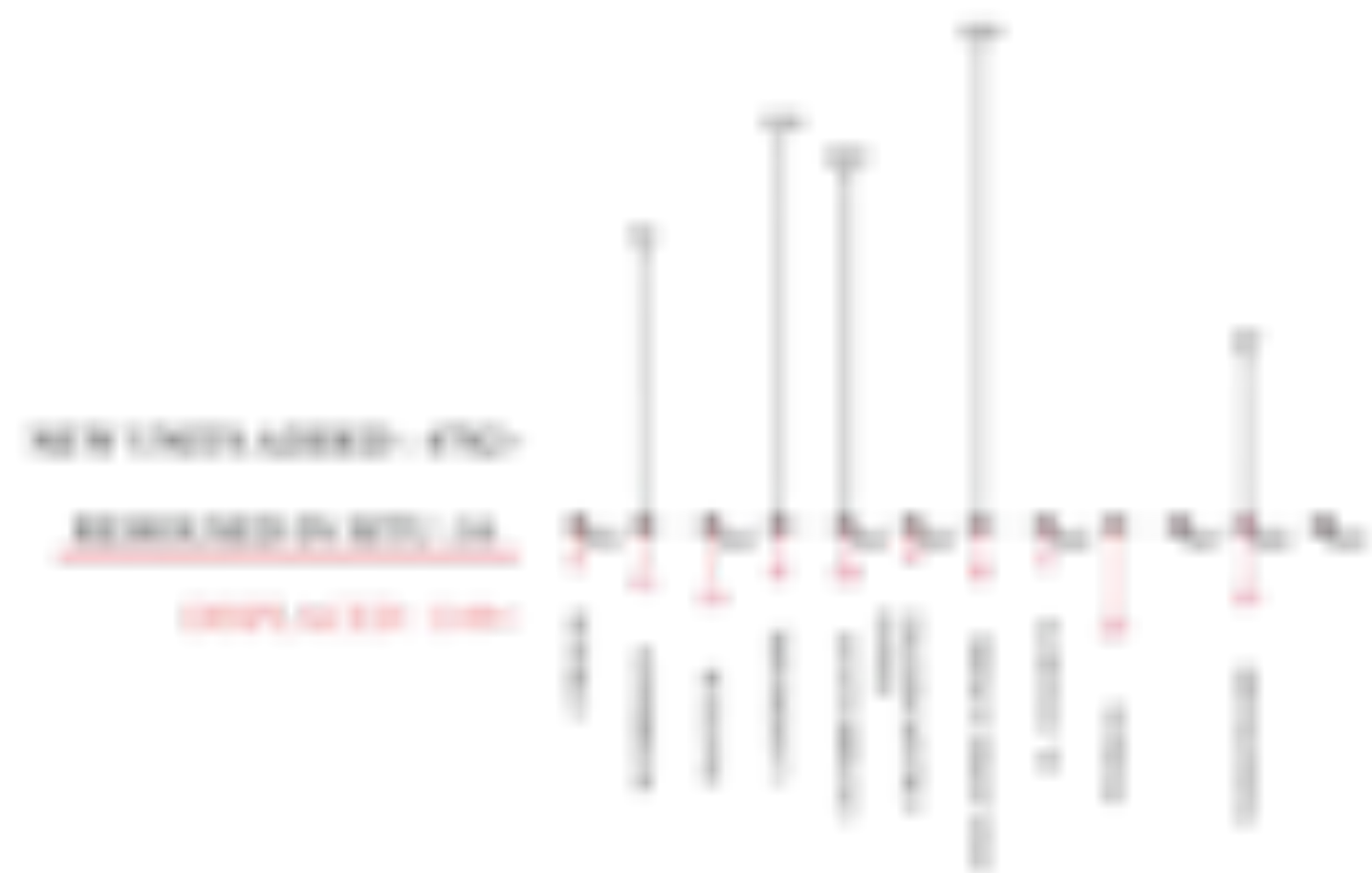
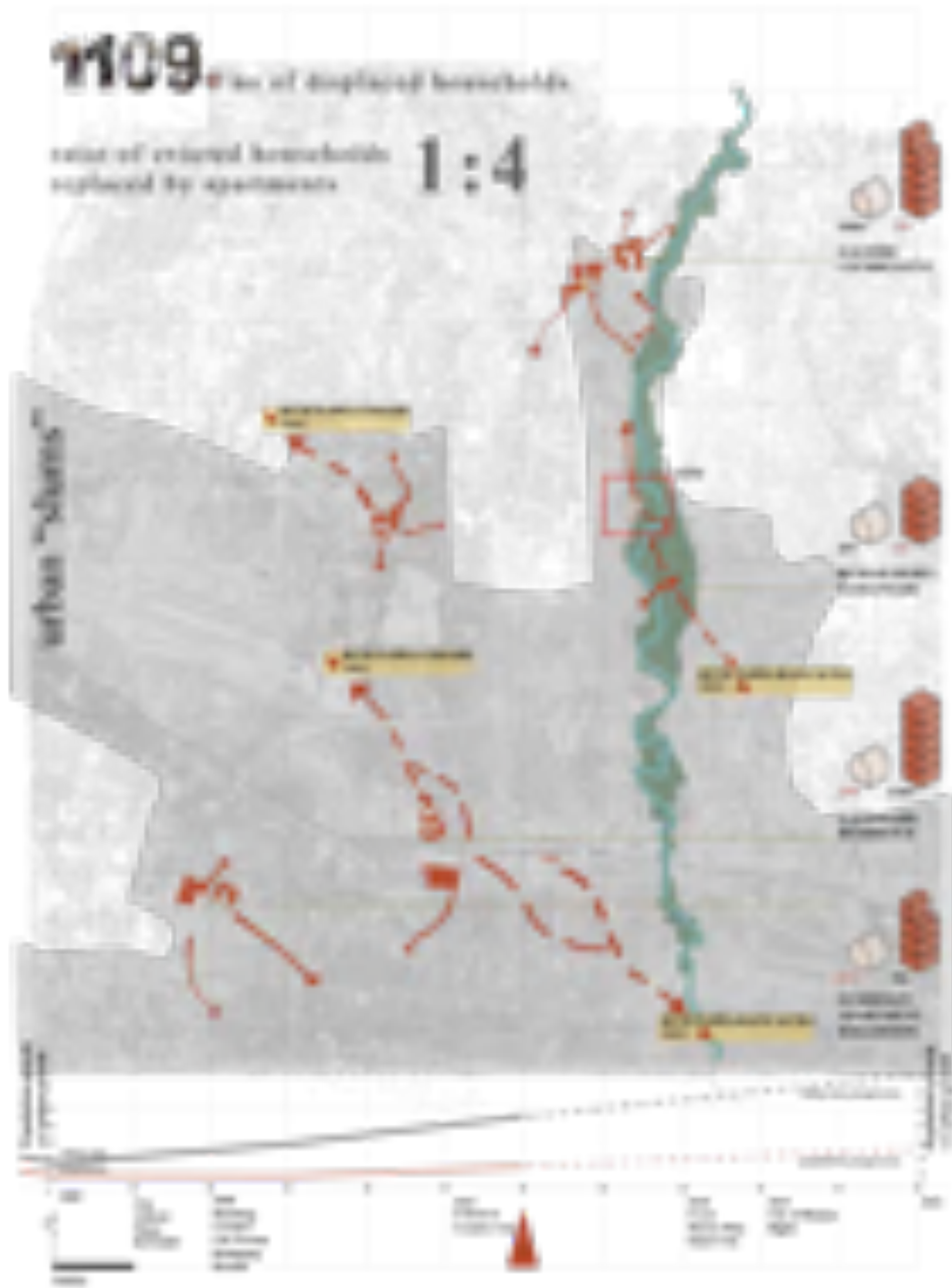
DEVELOPMENT AND PROGRESS



Tamansari Evictions in December 2019. Photo by Novrian Arbi, CNN



Illustration of Rumah Deret by Studio Akanoma replacing the evicted neighbourhood. Rumah Deret is a local government project.



Bandung's growth recorded against Dutch records of 1441 (above). Urban growth capacity has been studied to have surpassed population growth in 2014 (left).

The Story of a Citizen of ex Babakan Siliwangi who's Rusunawa apartment leaked often

Cerita Warga Eks Babakan Siliwangi di Rusunawa yang Mulai Sering Bocor
Kompas.com - 18/08/2016, 16:10 WIB



Sukses Rusunawa Gedung Serang tempat baru ribuan pengungsi Babakan Siliwangi, Senin (15/8/2016). Foto: KOMPAS.com/GENG SAMUDHANI (Kontributor Bandung, Dendi Ramdhani)



Rusunawa Rancacili on the western outskirts of Bandung

Site



Constructed Elevation



Site

Context : Eviction



2010



2012



2019



2021



Site April 2021
Footage : Raqida Mahia



View of Site, looking southwards
Towards Pasupati Flyover and Central Bandung

Kampung Pelesiran

Site during eviction -
2019

Mall

Site



Houses and living conditions between the mall & the river - slated to be taken over by the River Corridor Project.



Cikapundung River Corridor Project area



The river corridor project selectively leaves out the formalised cul de sac.

Co Production as a Community Practice

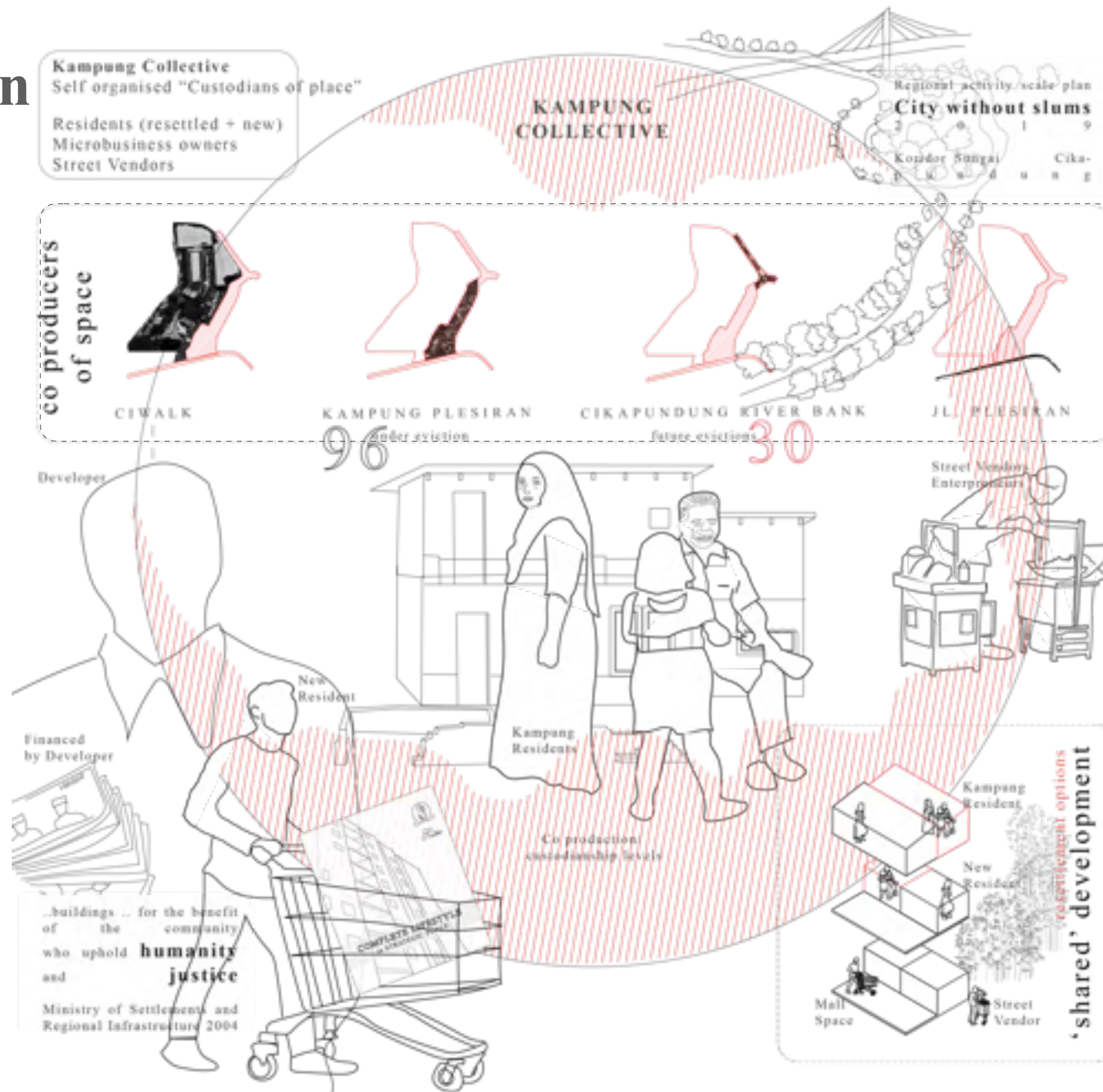


Co Housing at Kampung Tongkol, Jakarta, 2016
CC ASF Indonesia

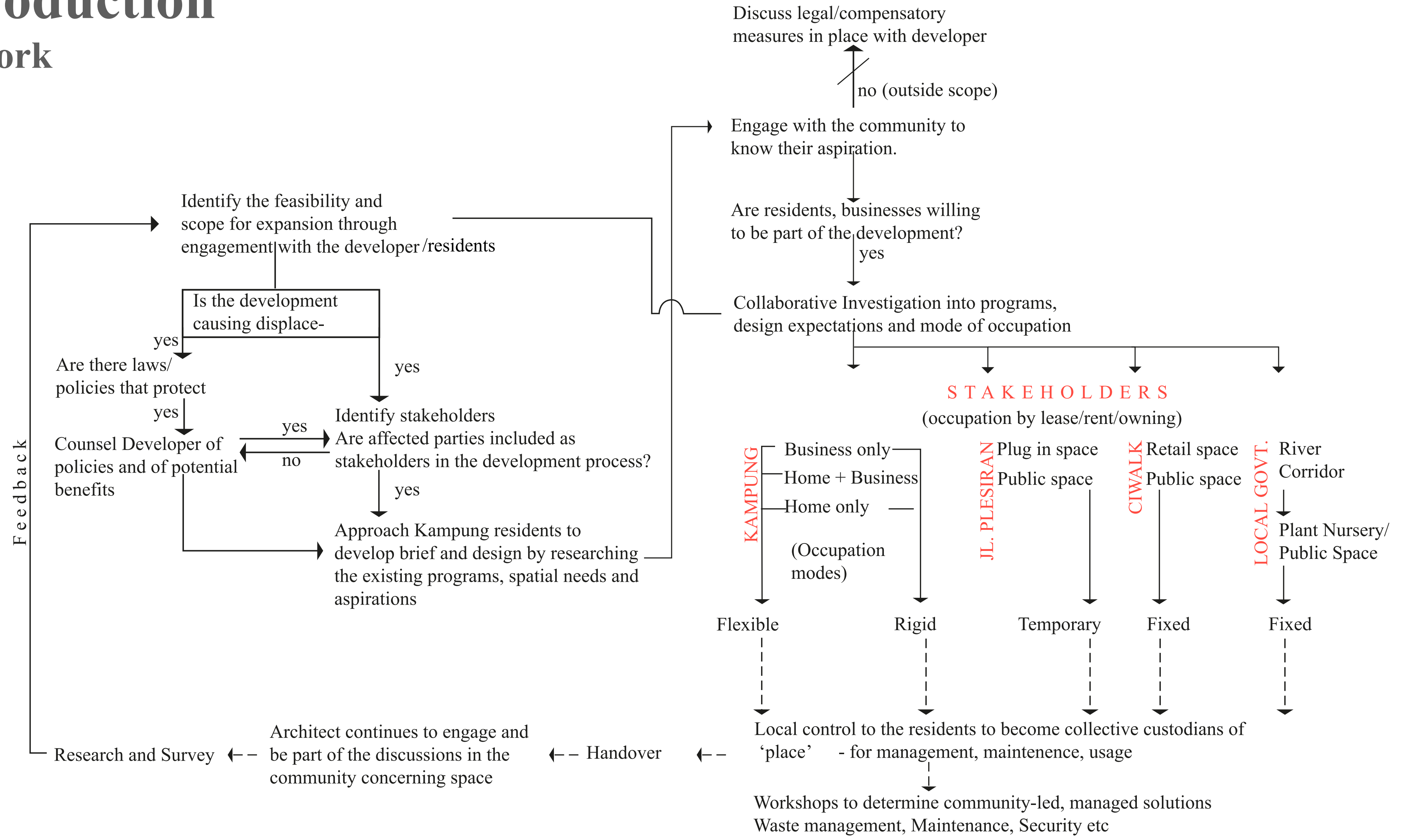


Gangstones activities in Kampung Lebak Siliwangi, Bandung 2019 -2021
[instagram.com/gangstones](https://www.instagram.com/gangstones)

Co Production As a Socio Spatial Practice



Co Production Framework



Discuss legal/compensatory measures in place with developer
 no (outside scope)

Engage with the community to know their aspiration.

Are residents, businesses willing to be part of the development?
 yes

Collaborative Investigation into programs, design expectations and mode of occupation

STAKEHOLDERS

(occupation by lease/rent/owning)

- KAMPUNG**
 - Business only
 - Home + Business
 - Home only
- JL. PLESIRAN**
 - Plug in space
 - Public space
- CIWALK**
 - Retail space
 - Public space
- LOCAL GOVT.**
 - River Corridor
 - Plant Nursery/ Public Space

Flexible Rigid Temporary Fixed Fixed

Local control to the residents to become collective custodians of 'place' - for management, maintenance, usage

Workshops to determine community-led, managed solutions
 Waste management, Maintenance, Security etc

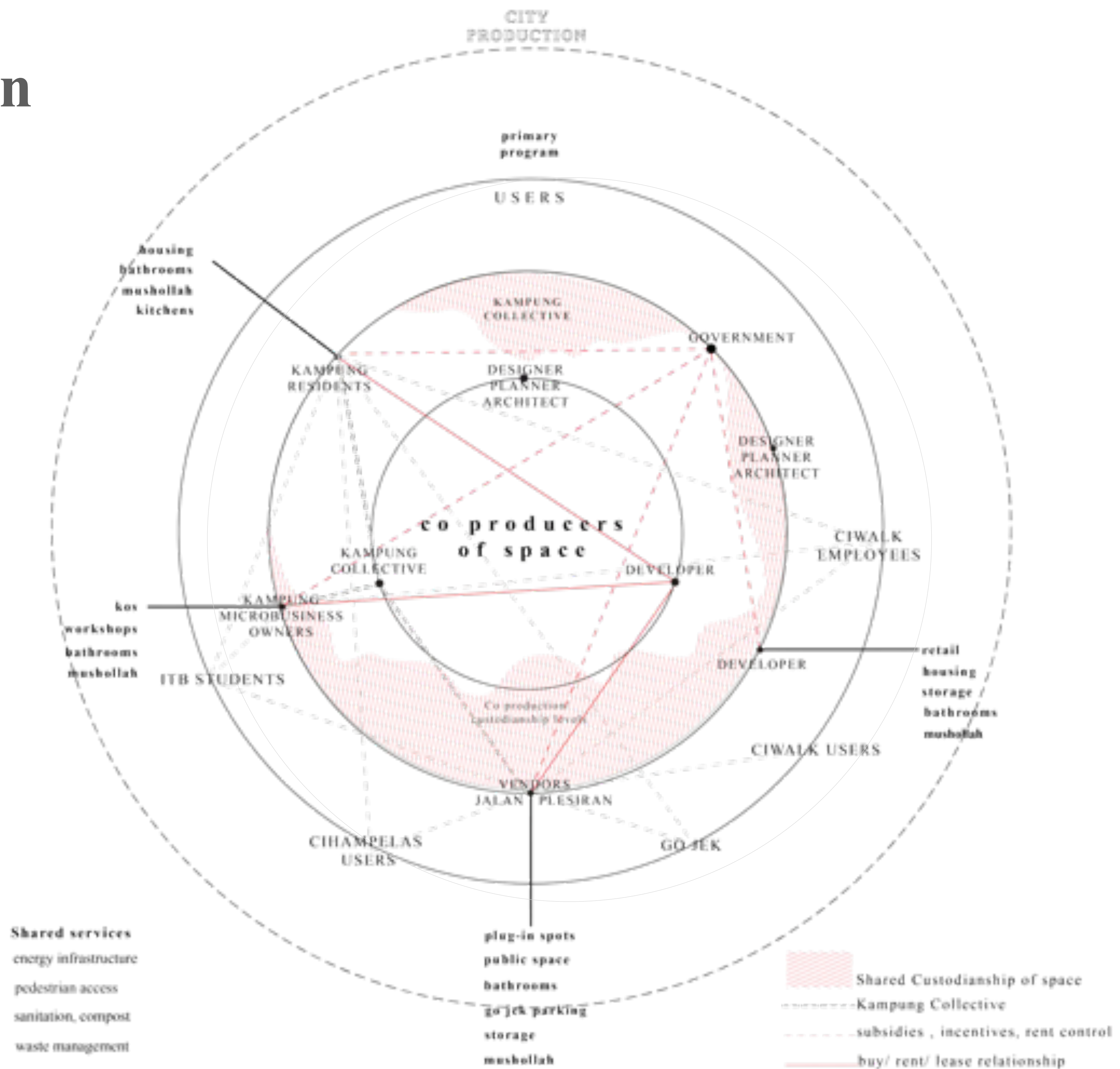
Feedback

Research and Survey

Architect continues to engage and be part of the discussions in the community concerning space

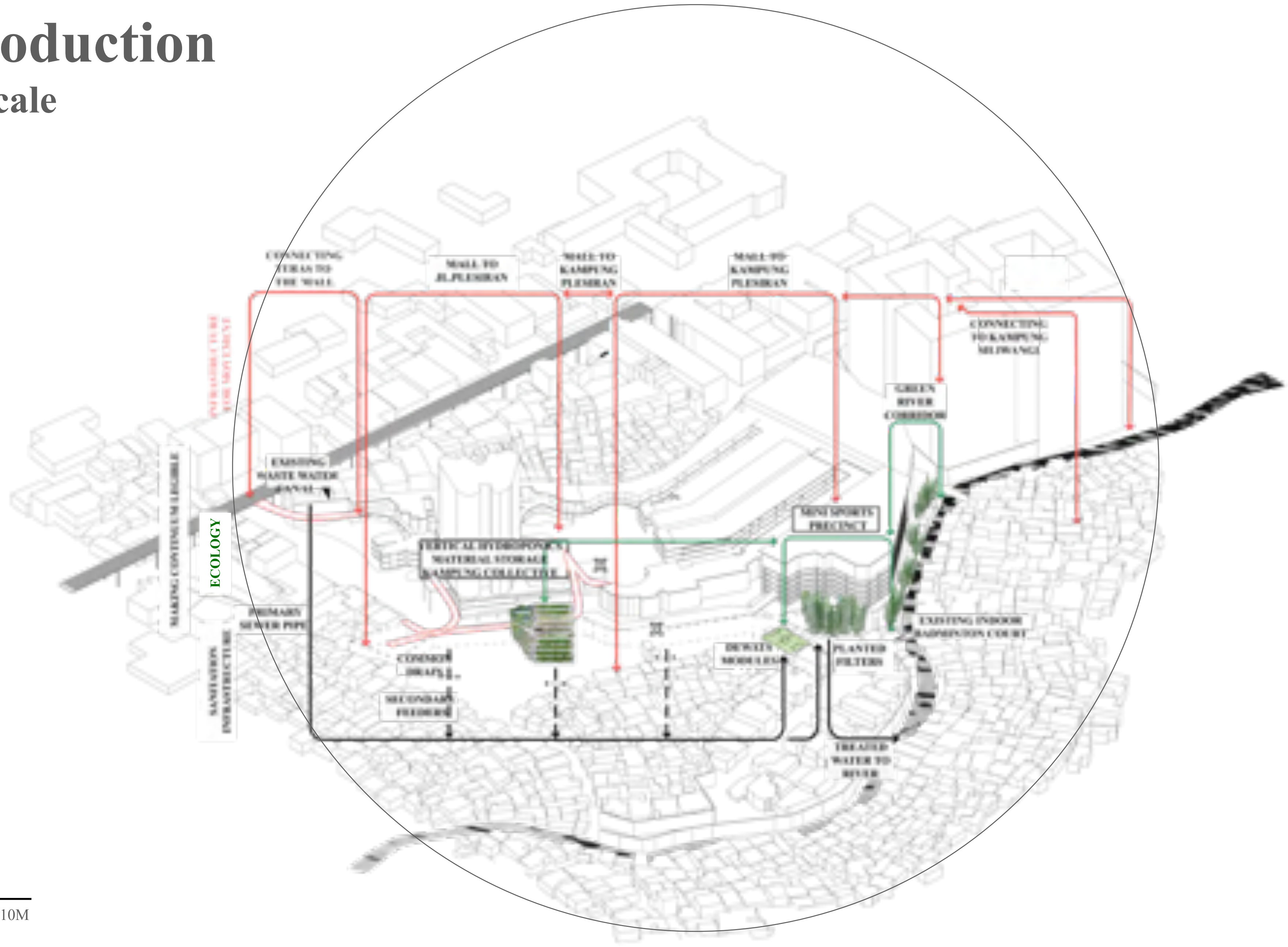
Handover

Co Production Framework



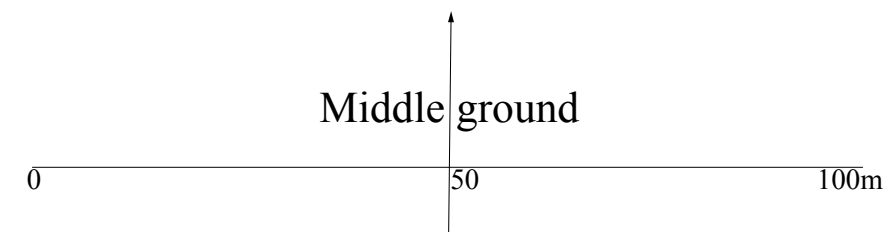
Co Production

Urban Scale



Co Production

Translation to Site

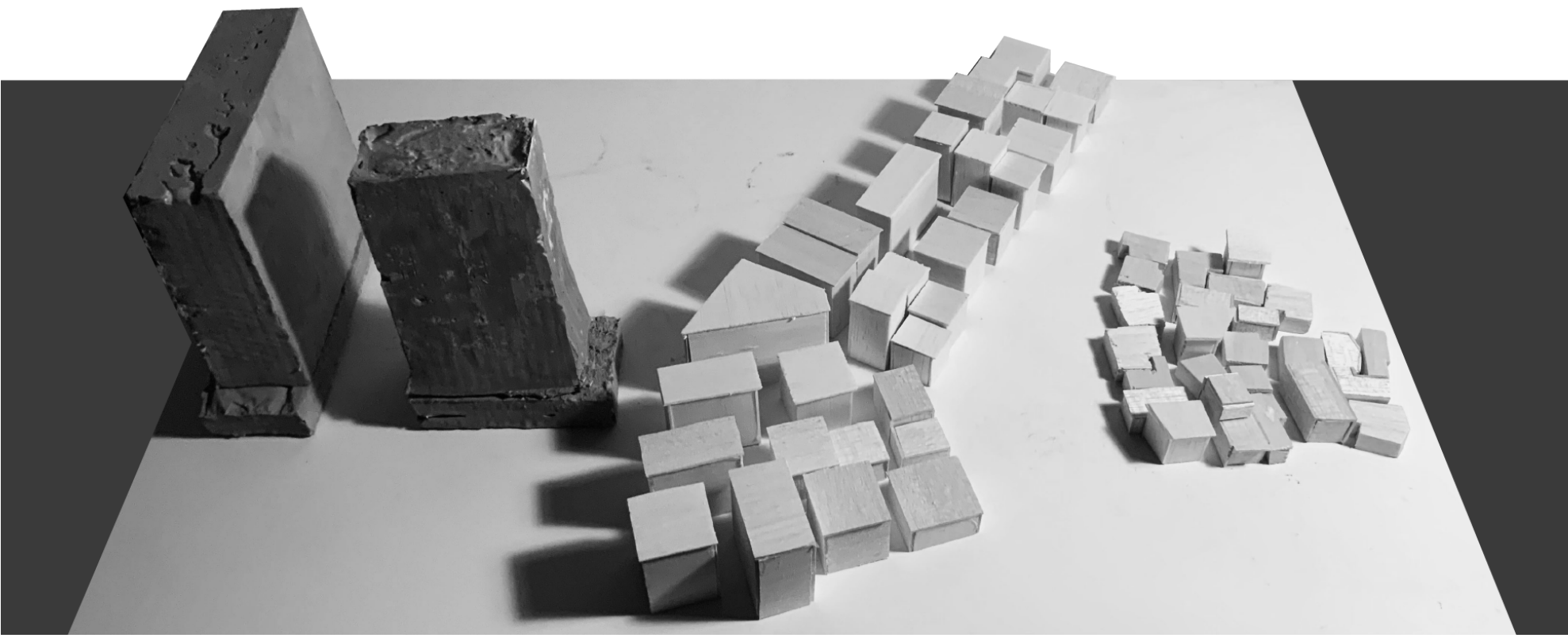


1. Proposed Teras - Ciwalk Walkway Connection
2. Walkway from Jalan Cihampelas
3. Proposed connection to Jalan Pelesiran
4. Semi Commercial Interface to Jalan Pelesiran
5. Kampung Collective - Congregation, Prayer, Storage with Hydroponics as common activity
6. Proposed Pedestrian Connection to existing Ciwalk Walkway
7. Middle Ground and Kampung Pelesiran alley junction
8. Deprivatised shared road, service access
9. Collective managed Public Recreation Area, proposed site for temporary architecture
10. Constructed Wetlands, Proposed Bamboo nursery
11. Existing Indoor Badminton Court
12. Collective operated Bamboo Nursery subsituting proposed Cikapundung Corridor



Co Production

Translation to Site



Hegarmanah &
Galerie Ciumbuleuit Apartments

MIDDLE GROUND

Kampung Pelesiran (partial)



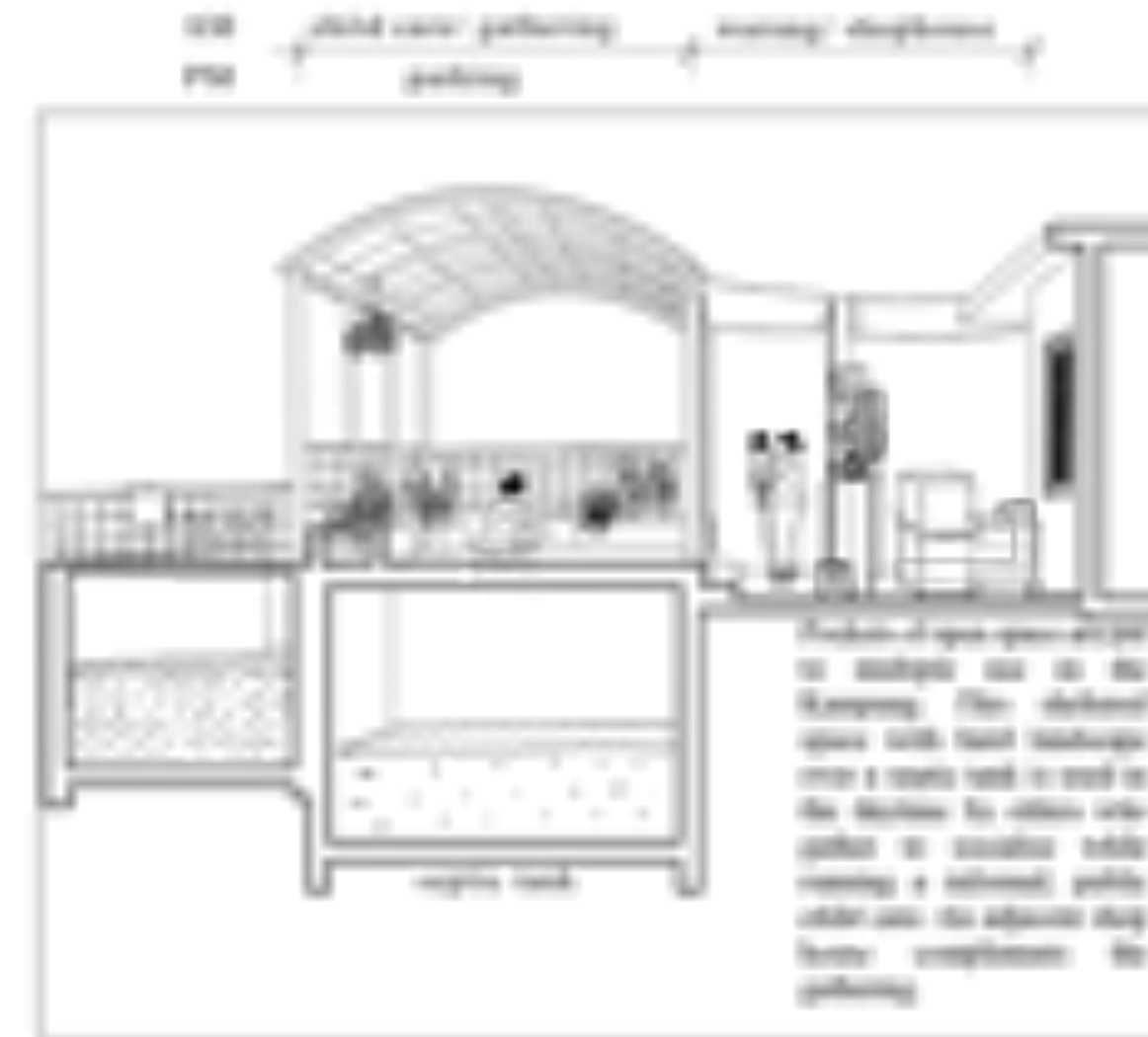
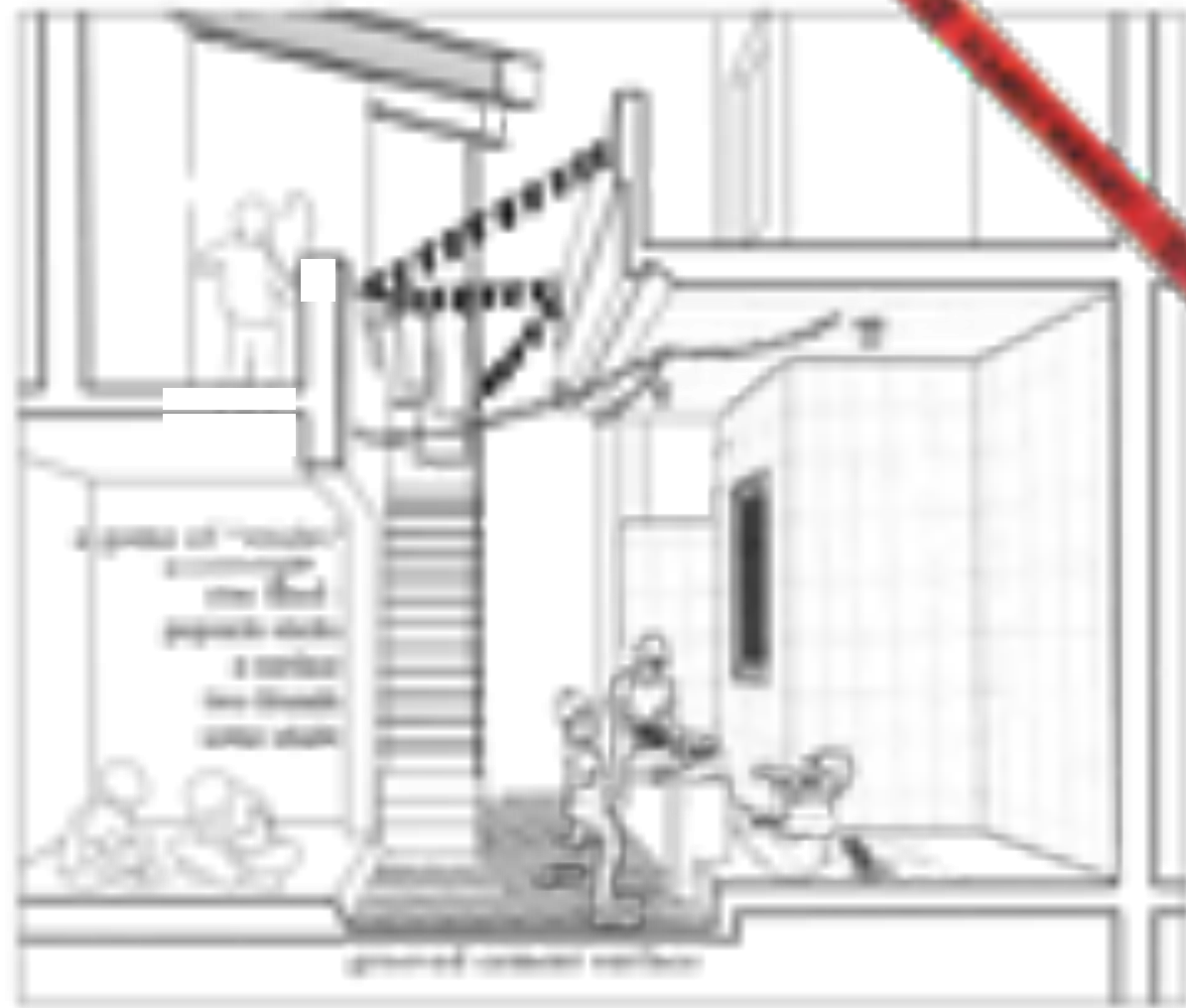
Co Production

Existing Socio Spatial Systems



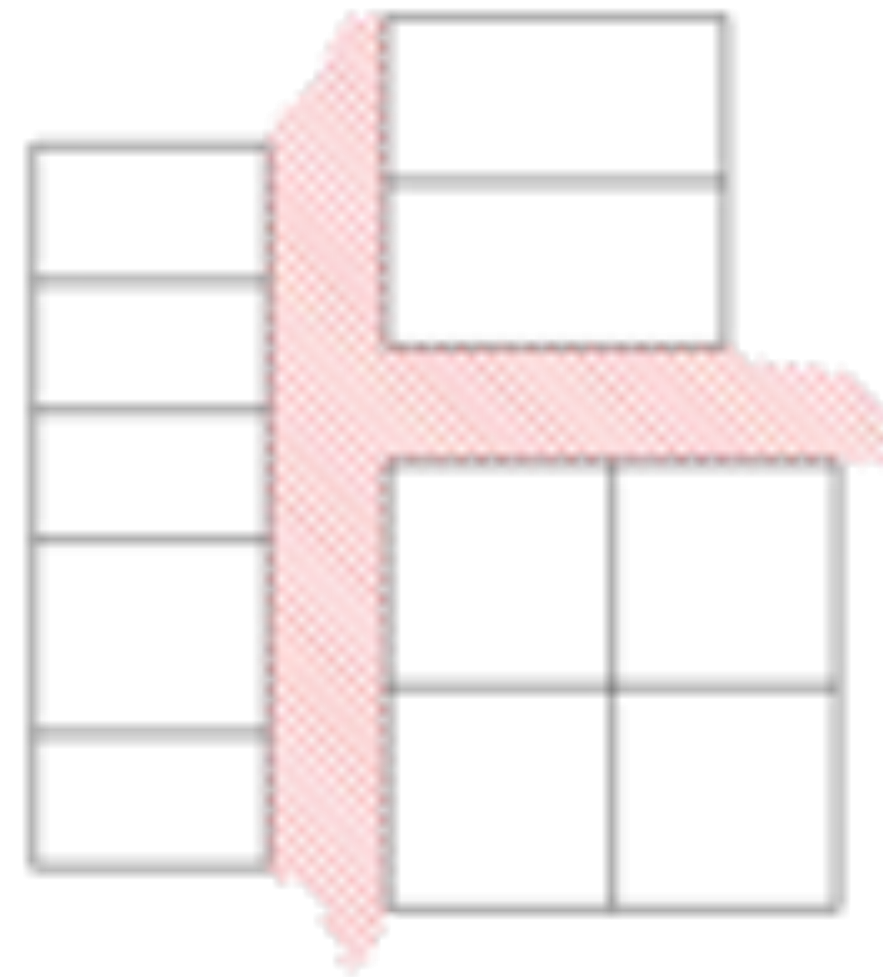
Co Production

Ethnographic Analysis



Co Production

Architectural Scale



Rigid Layout

Determined
Non contingent
Clear demarcation of Public and Private

Current Practice



Socio Spatial Relationship in the Kampung



Minor Adaptation

Porch
Garden
Storage
Shopfront
Parking

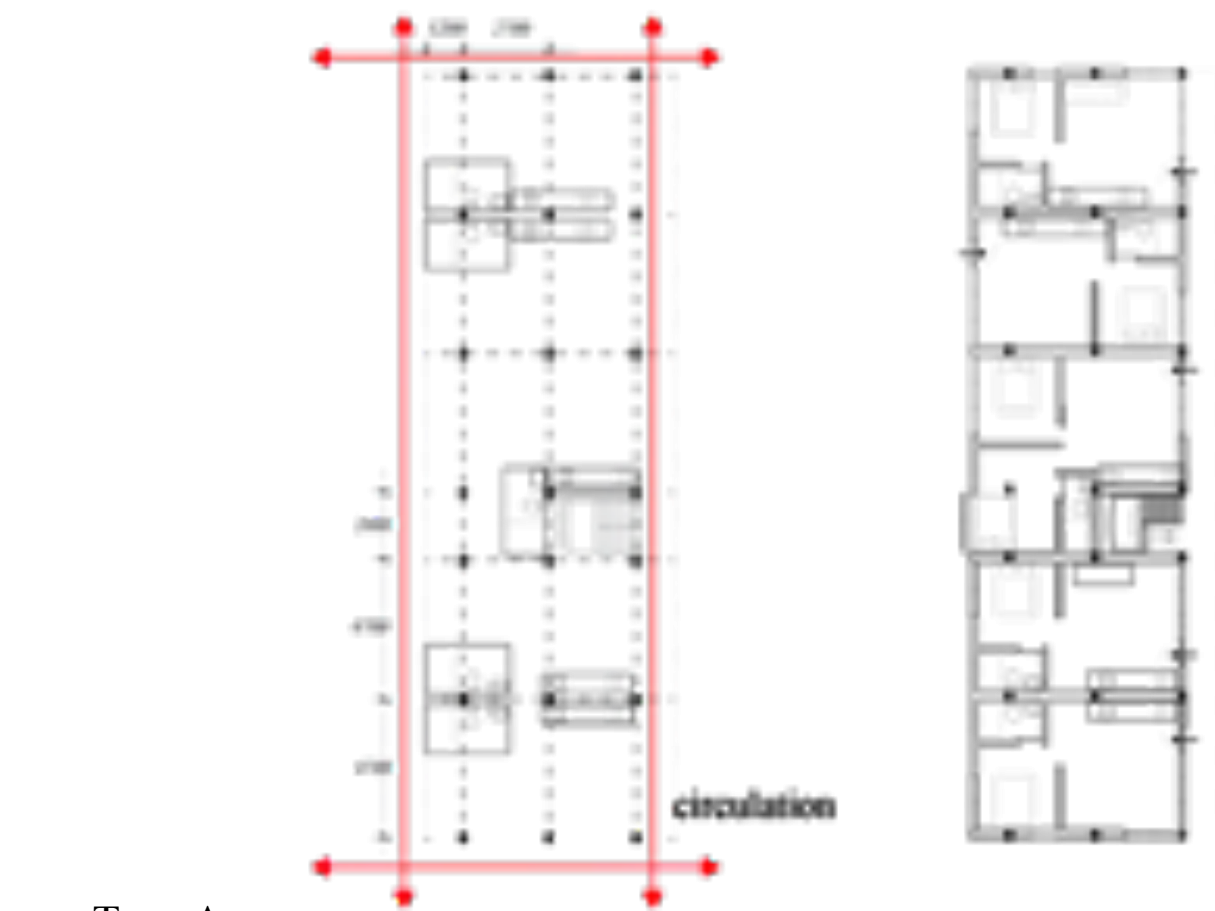
Major Adaptation

Extra room
Hostel
Eatery
Shop
Workshop
Parking

Proposed

Co Production

Architectural as framework



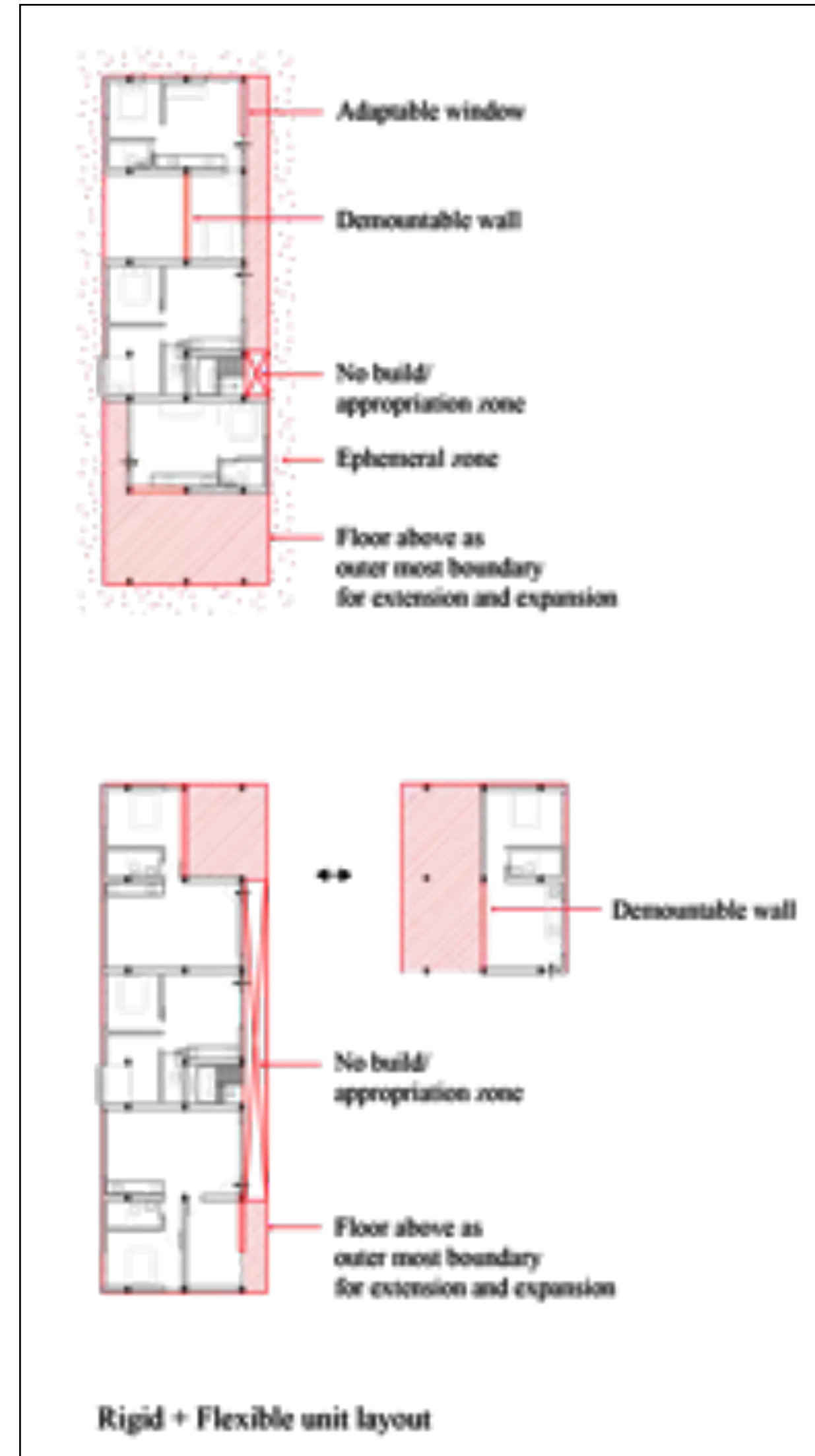
Type A
Ground Level



Type A
Level 1+

General arrangement

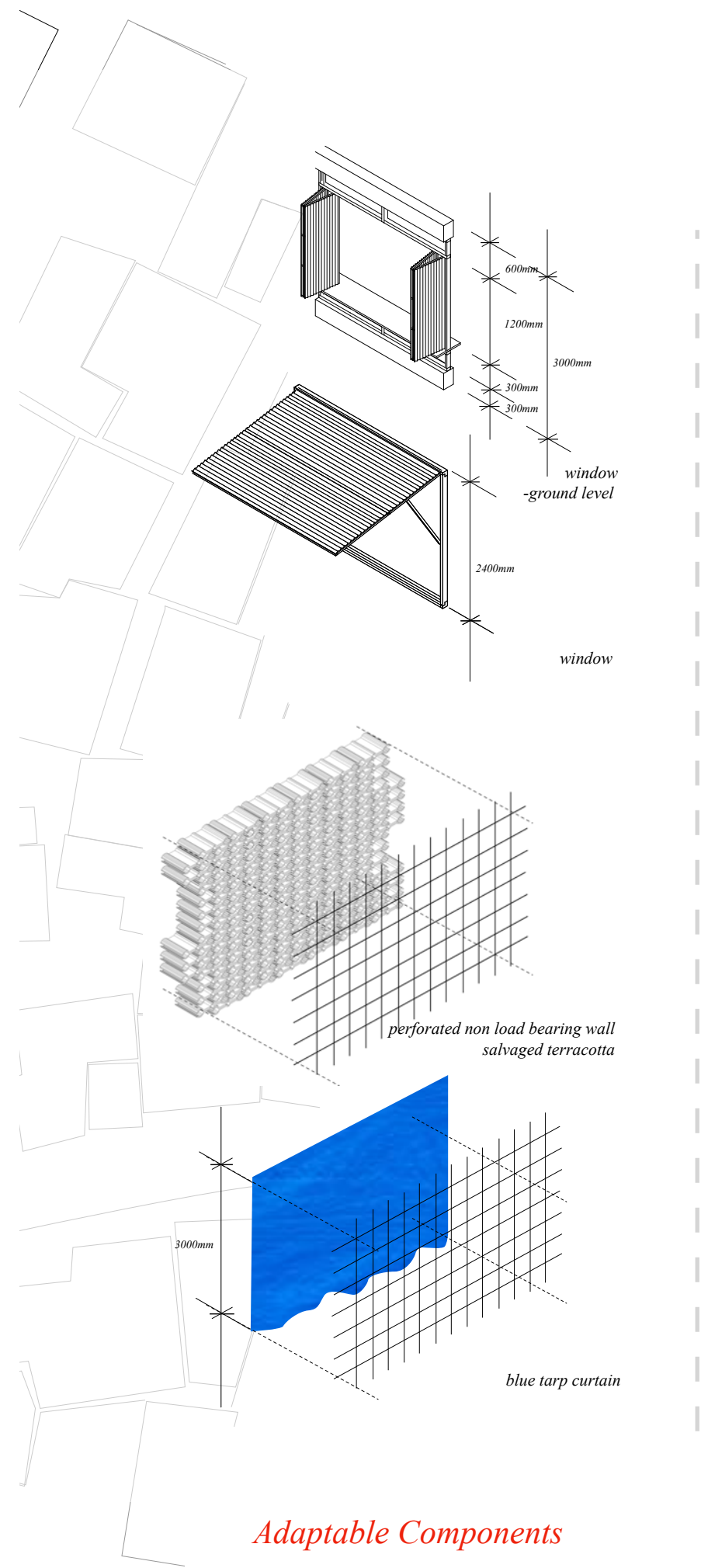
Rigid layout



Rigid + Flexible unit layout

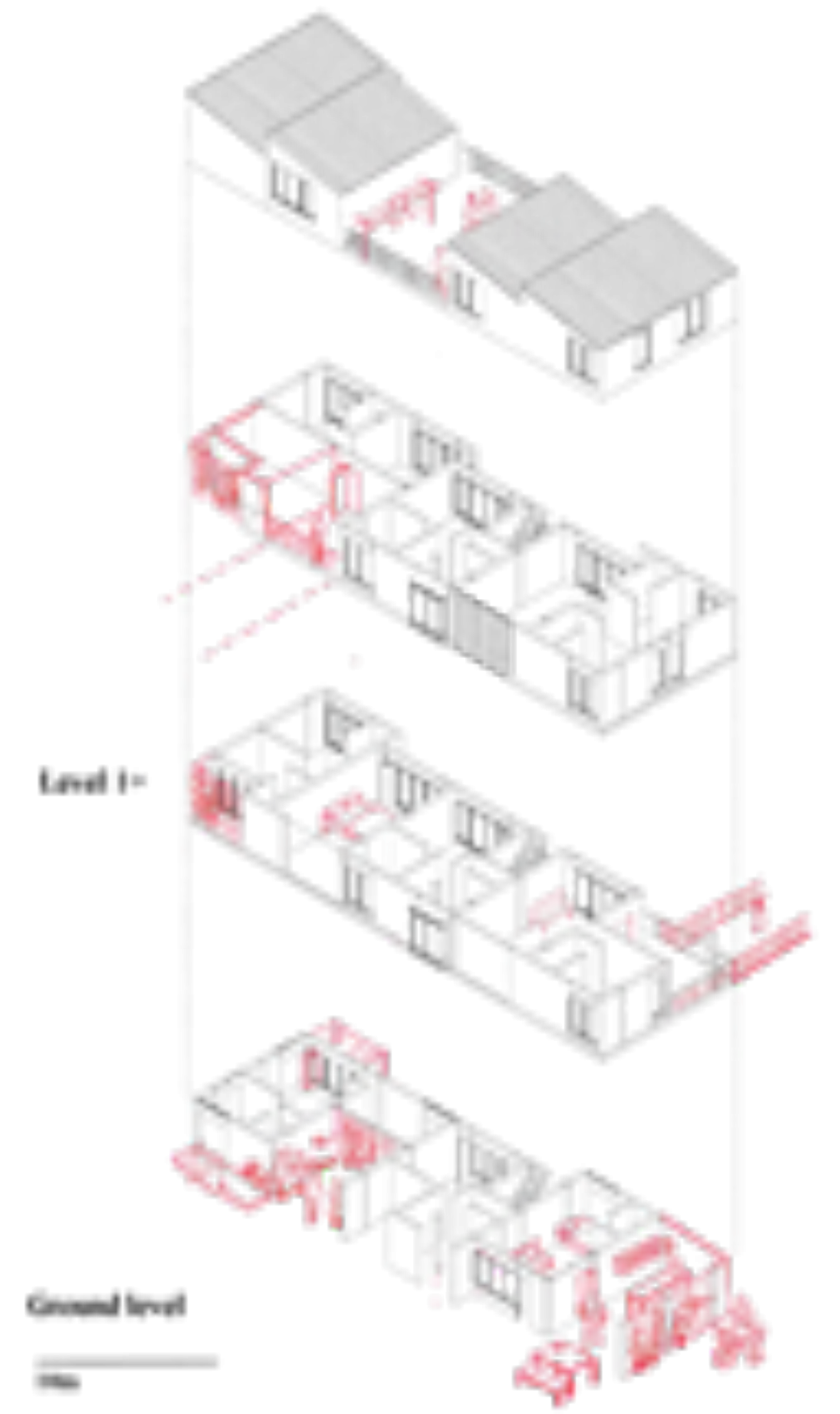
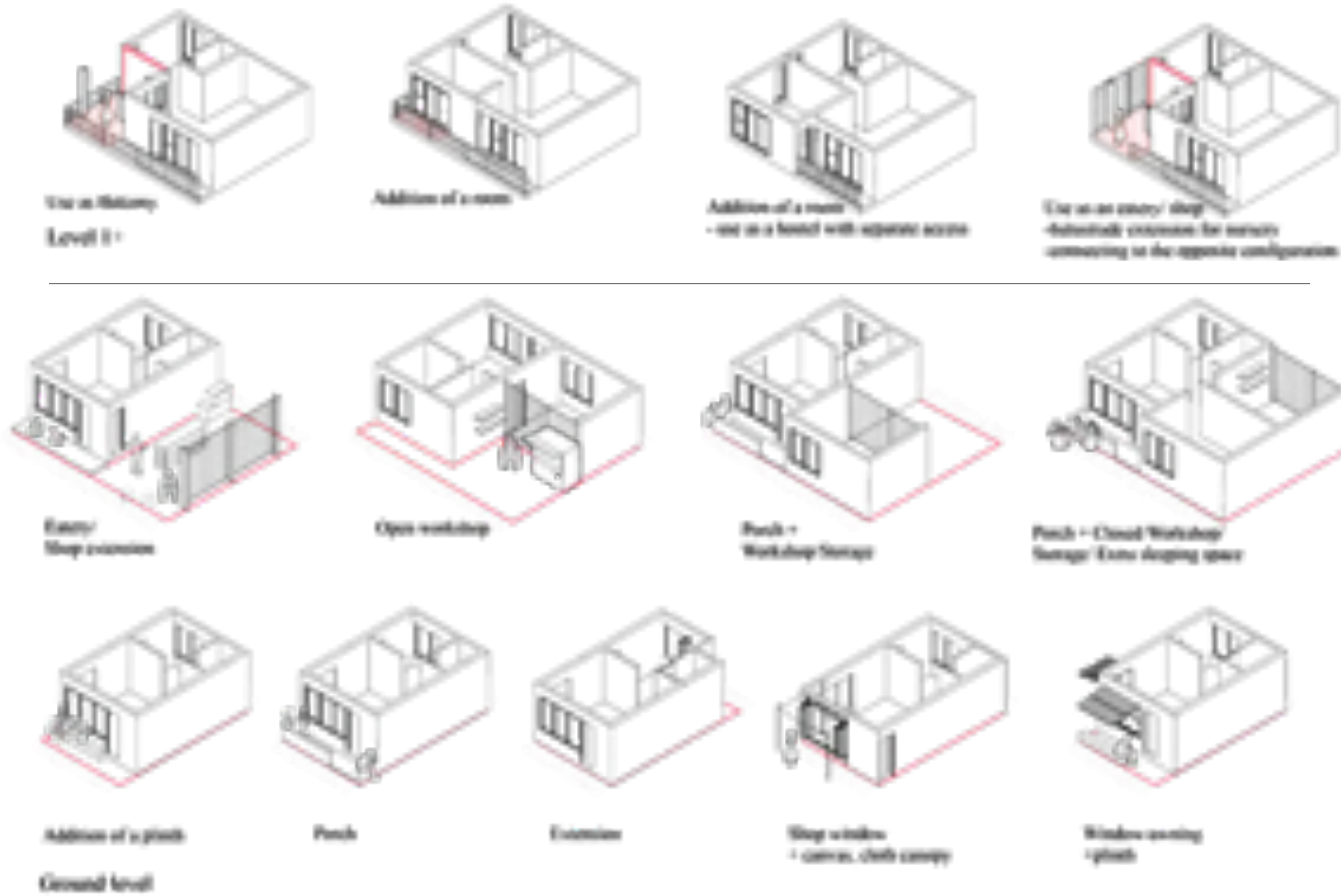
Co Production

Architectural as framework



Adaptable Components

ADAPTION TYPE I



Co Production

Architectural as framework



Co Production

Architecture as framework

Partial Floor Plan, Participation



- A. Bed - Room
- B. Kitchen - Family room
- C. Plans Nursery
- D. Workshop
- E. Workshop with a view from
- F. Bathroom
- G. Terrace
- H. External storage
- I. Porch
- J. Keeping Collective CP - Shared Children
- K. P&I Street Under on the
- L. P&I Street Under on the
- M. On the way

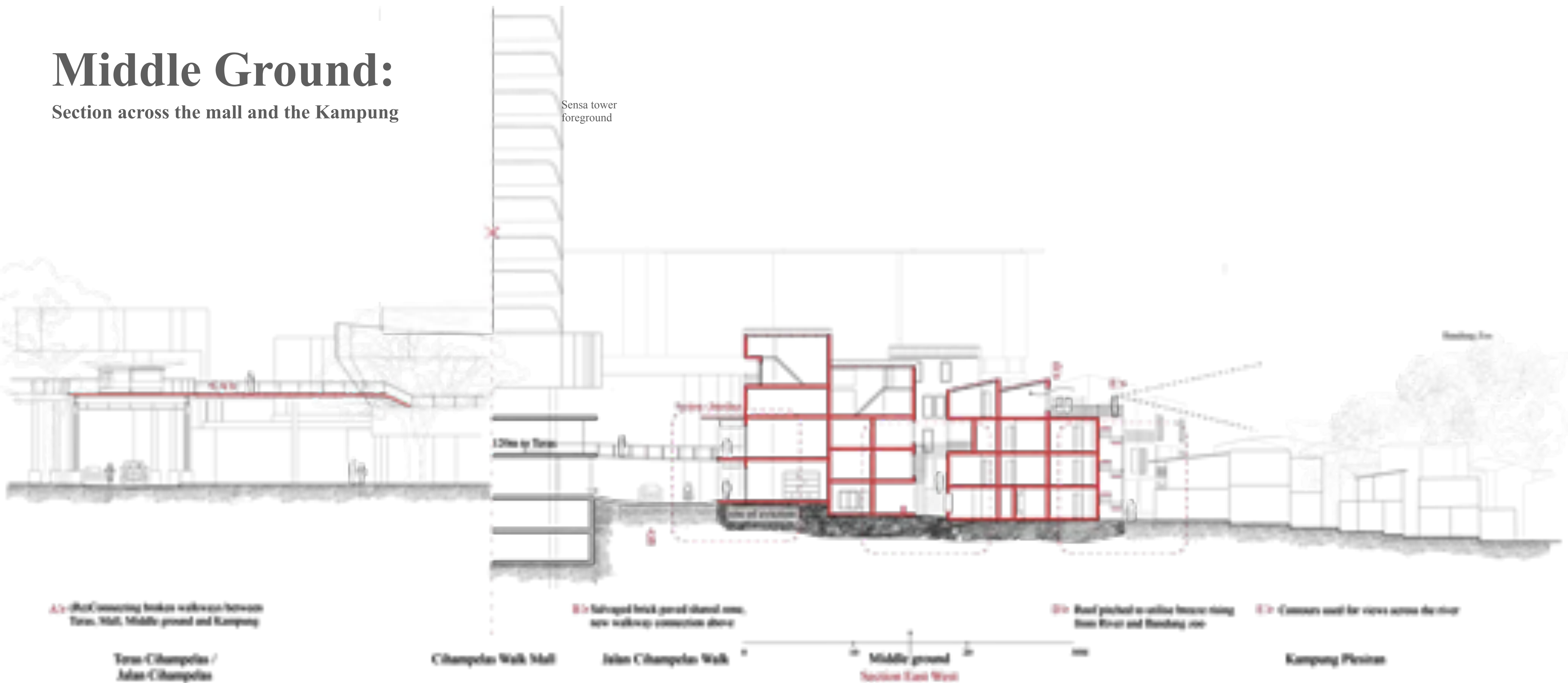
- Adaptable Windows
- Accessible Walk
- Brickwork Wall

Middle ground
Ground Level
Composite: Framework + Adaptable

Middle ground
Ground Level
Composite: Framework + Adaptable

Middle Ground:

Section across the mall and the Kampung



Middle Ground:

Interfaces



Mall

Middle Ground

- A1 walling to screen wall
- A2 ground area with low perforated screen to allow sunlight penetration using perforated bricks
- B1
- C1

- C1 the specific usability of underdevelopment, especially in dark area, therefore perforated walling



Middle Ground

Section - Interface

- B1 entrance, low raised screen to the effect of light and air passage, however, screen is porous through
- B2
- C1
- C2

- B2 independent mobile wall face at screen level
- C1 perforated brick wall - permeable walls
- C2 transparent wall designed to be demountable



Middle Ground

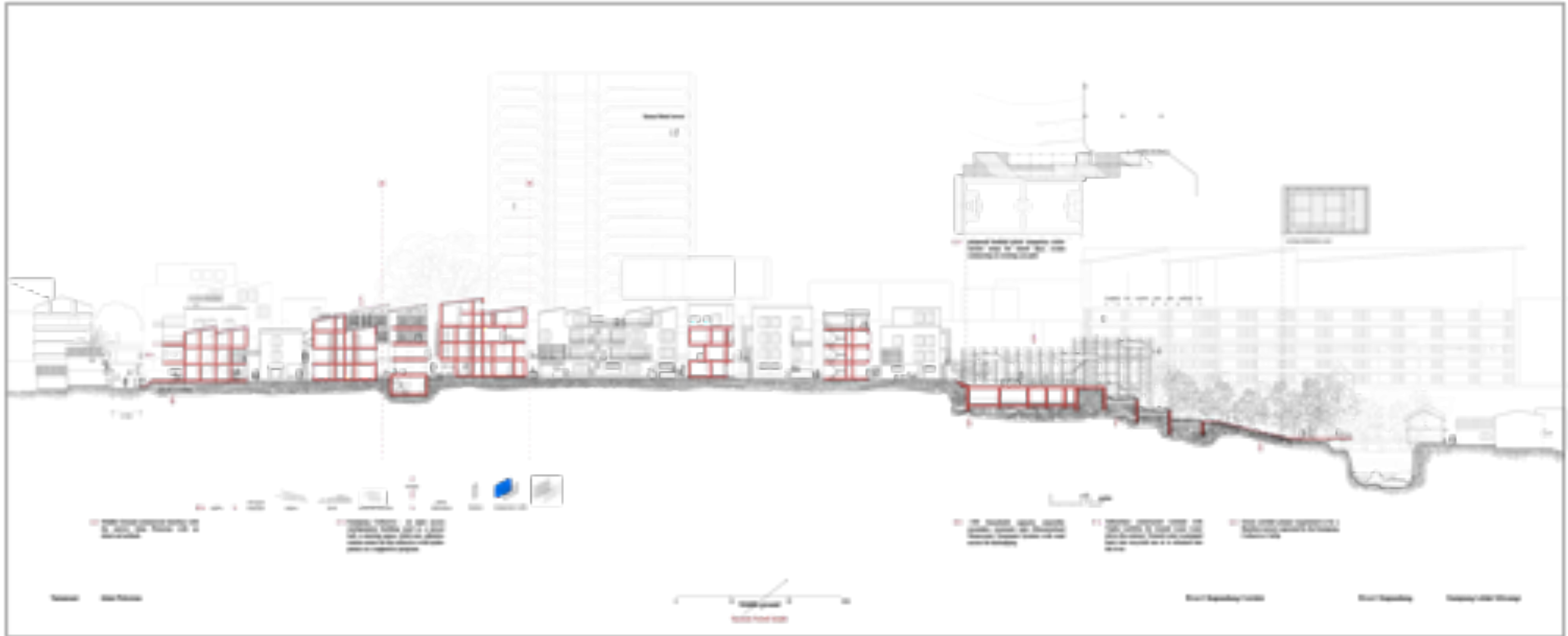
Gg Pelesiran VII

Kampung Flevisan

- A1 permeable active interface with the Kampung with existing structure, structure is connected through with the Kampung connection
- A2
- B1
- B2
- C1
- C2

Middle Ground:

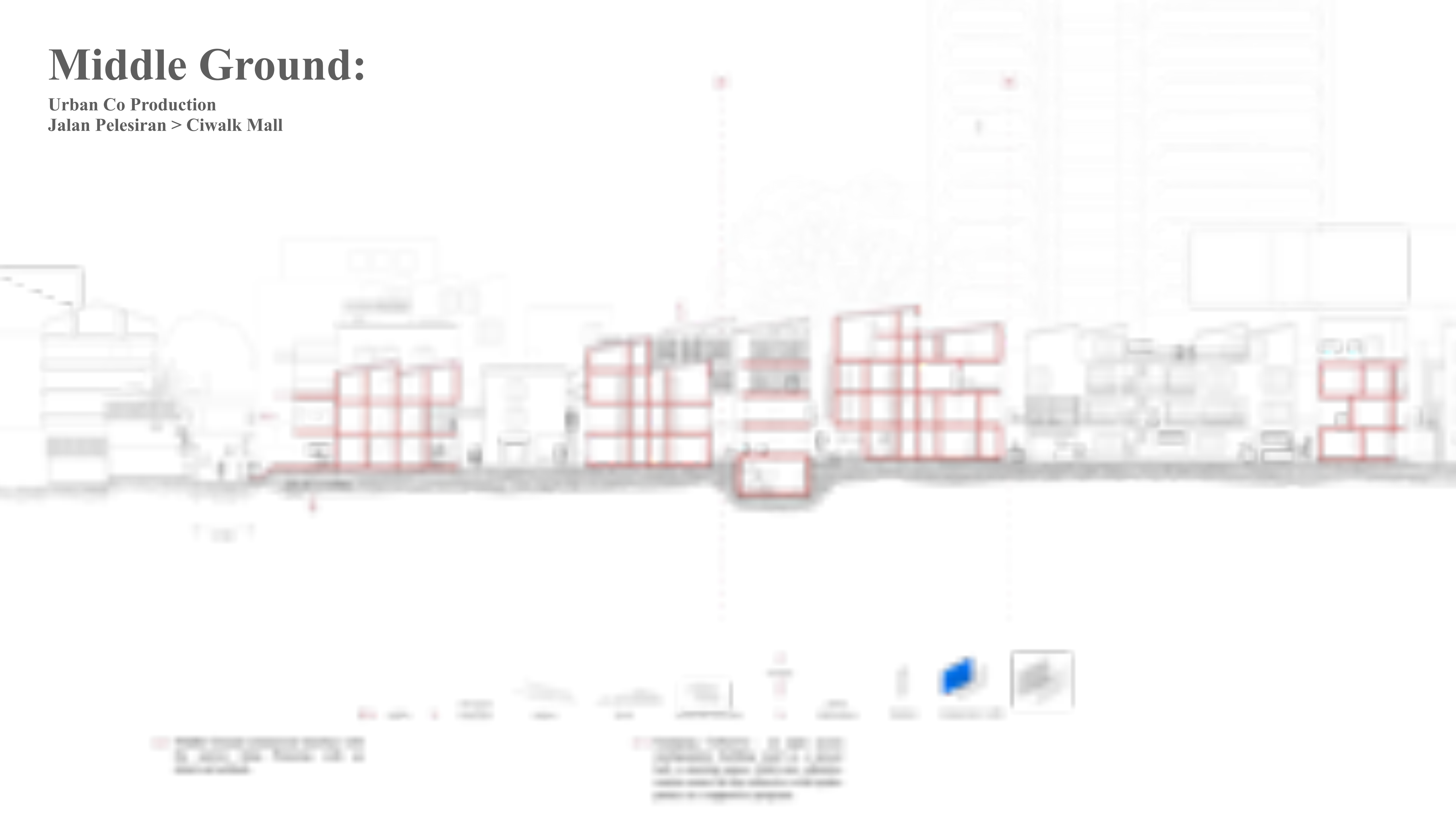
Urban Co Production



Middle Ground:

Urban Co Production

Jalan Pelesiran > Ciwalk Mall



Middle Ground:

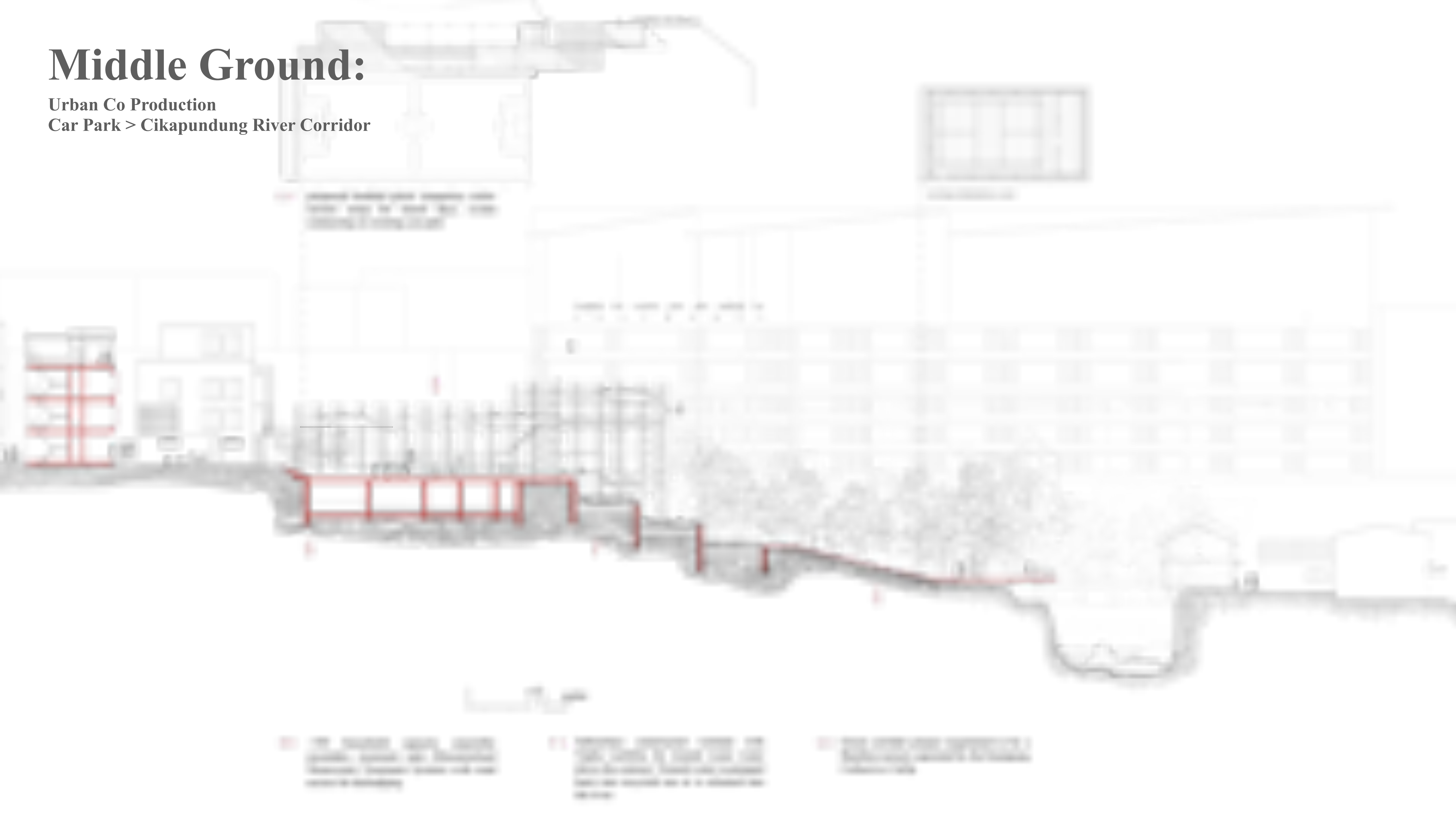
Urban Co Production
Ciwalk Mall > Car Park



Middle Ground:

Urban Co Production

Car Park > Cikapundung River Corridor



Middle Ground:

Co Production Illustration



Eatery

An adaptable space being used as a Warung (Shop, Eatery) by the residents next door. A porch is built by the resident over time - seen here to use as private storage space in public. The presence of a Warung and the spatiality associated with the porch - the platform and knee wall invites social relationships to be formed and nurtured.



Workshop

Flexible spaces adapted to workshops. The wall on Level 1 can be dismantled and moved to the periphery to expand living space. Alternatively the bamboo curtain can be pulled down to create extra sleeping space. The wall on Level 1 functions also as a repository of terracotta tiles that can be dismantled and repurposed to form a roof.



Kampung Collective

Level 3 and 4 of the Kampung collective - a multipurpose building with a prayer space (musholladh), a space for gatherings, meetings, PKL workshops, child care, administration and hydroponics as a supporting activity. Hydroponics (to grow water spinach) on the periphery functions as a semi permeable membrane, negating the requirement of permanent walls.